



FOR IMMEDIATE RELEASE

WhiteRock Lithium’s exploration continues to produce high grade lithium with over 60 metres of continuous channel sampling averaging 2.1% Li₂O on its 100% owned Sacred Banana Property, James Bay Region, Quebec

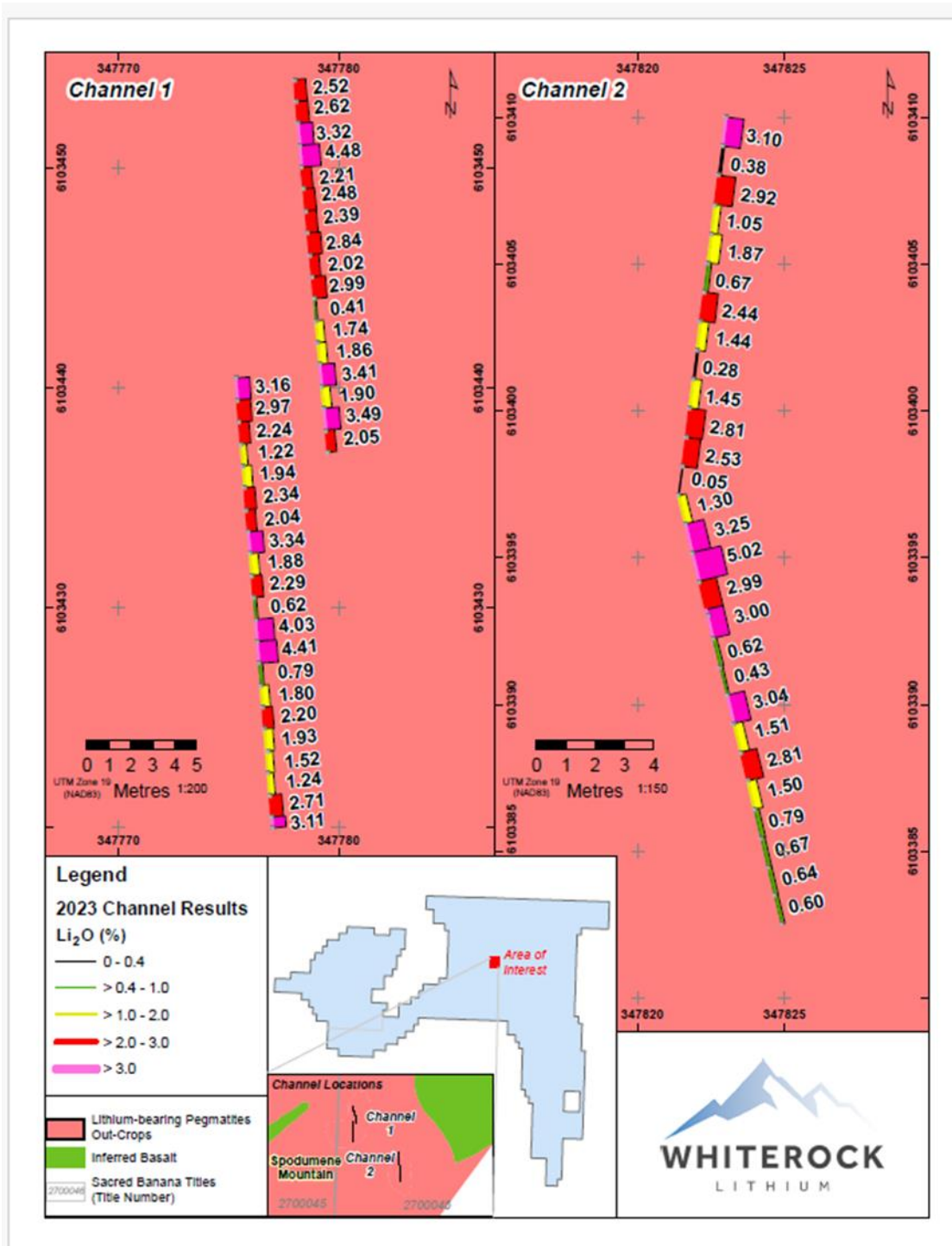
Highlights

- Lithium grades up to 4.48% Li₂O in Channel 1 and 5.02% Li₂O in Channel 2;
- Channel 1 - average grade of 2.35% Li₂O over 34.5 metres of one metre continuous samples
 - 16 samples returned grades higher than the average of 2.35%
- Channel 2 - average grade of 1.76% Li₂O over 28 metres of one metre continuous samples
 - 10 samples greater than 2.5% Li₂O and 12 samples greater than the average;
- Channel 1 is open at both ends with grades in excess of 2.52% Li₂O and Channel 2 is open at both ends with the north end of the channel returning 3.1% Li₂O;
- Both channel samples are from Spodumene Mountain which is 600 x 200 metres and has relief of 50 metres. The outcrop is open in all directions (Photo 1).
- The channel sampling follows up on WhiteRock’s initial sampling programme that returned lithium grades up to 6.43% Li₂O from 13 rock samples averaging 3.01% Li₂O;

Vancouver, British Columbia – January 17, 2024: WhiteRock Lithium Corp. (“WhiteRock” or the “Company”) is pleased to announce results from the 2023 channel sampling programme completed in October on Spodumene Mountain at its 100% owned Sacred Banana Property (“Sacred Banana” or the “Property”), James Bay region of Quebec (Figure 1,2). The Spodumene Mountain pegmatite is approximately 600 x 200 metres and has relief of about 50 metres and is open in all directions. Spodumene Mountain is characterized by approximately 40-50% large spodumene crystals up to four metres in length, as well as lepidolite and rubellite. The megacrystic (very coarse grained) nature and widespread distribution of lithium-bearing minerals at Spodumene Mountain and its environs, suggests that the claims overlie a region that was geologically very conducive for hosting a significant deposit.

Sacred Banana and the adjoining Yoshi property, also 100% owned by WhiteRock, consist of 1,360 claims covering approximately 67,000 hectares of highly prospective ground (Figure 2). It is important to note that the property is approximately 30 kilometres from the all weather Laforge-Deux Road.

Figure 1 – Channels #1 and #2 on Spodumene Mountain



The channel sampling carried out at the “tail end” of the 2023 summer/fall season confirmed that the Spodumene Mountain occurrence is not just an isolated pegmatite intrusion within the regional mafic volcanic package but is part of an extensive dyke swarm that has been identified for more than 2 kilometres along strike and potentially 1.3 kilometers in an east-west direction.

WhiteRock believes that the consistency of the Li_2O geochemical results (dominated by +2.0% grades) within the channeled rock (Figure 1, Photo 2 and 3) augments our observations that the mineralized horizon is at least 300 metres in width at Spodumene Mountain alone. WhiteRock has not yet delineated the definitive strike length or width of the occurrence.

Mr. Dustin Nanos, President and CEO, commented: “The channel sampling results show that the very impressive, and continuous, high-grade lithium mineralization that represents Spodumene Mountain may only represent a fraction of the mineralization to be identified on the Sacred Banana and Yoshi claims. The 2024 drilling campaign can’t start soon enough for us.”

The Phase 1 aspect of the programme commenced in late-August, early-September 2023. During the Phase 1 program the Company discovered several spodumene bearing outcrops over two kilometres along strike as well as numerous spodumene bearing pegmatite boulders. A Phase 2 program commenced in early October and consisted of additional property mapping and sampling, a reconnaissance magnetometer (“MAG”) survey and channel sampling at a portion of Spodumene Mountain. Three channel samples were completed for a total of 66 metres.

Photo 1 – Spodumene Mountain – Looking north



Spodumene Mountain – outcrop measures 600 x 200 metres and has relief of 50 metres. The outcrop is open in all directions. Channel sampling took place less than 100 metres to the south (bottom of photo).

Figure 2 – Location map of the Sacred Banana and Yoshi claims

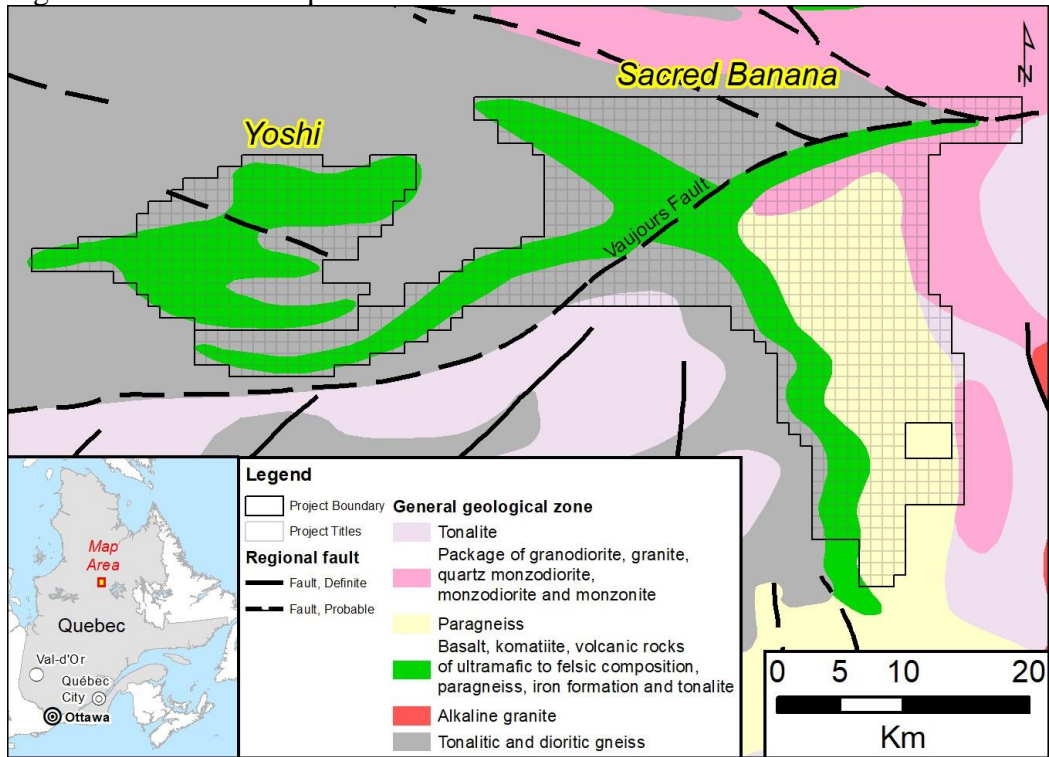


Photo 2 – Channel #1 – Spodumene Mountain



Channel sampling at Spodumene Mountain. A total of 68 1-metre-long samples were taken from the two channels.

Photo #3 – Megacrystic spodumene-rich pegmatite adjacent to Channel #1, Spodumene Mountain



The exploration at Sacred Banana is being carried out by Groupe Magnor Exploration Inc. (“Magnor”) of Saguenay, Quebec. Magnor is owned and managed by Frederic Bergeron and is a full-service exploration consulting firm.

Qualified Person

The scientific and technical information contained in this press release in regards to Quebec has been reviewed and approved by George M. Yordanov M.Sc. He is a Professional Geologist registered in Quebec (OGQ).

About WhiteRock Lithium

WhiteRock Lithium is a privately held critical minerals exploration and development company based out of Calgary, Alberta. The Company is focused on exploration for lithium in Canada and on rapidly advancing its flagship Sacred Banana lithium project. The Company currently holds over 100,000 hectares of highly prospective lithium exploration claims in Quebec.

Website: <https://whiterocklithium.com>

WhiteRock Lithium Corp
1612 17th Ave SW
Calgary, Alberta
T2T 0E3

Information/Contact

Dustin Nanos, President & CEO
dustin@whiterocklithium.com
1-587-577-9878